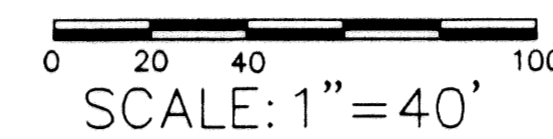


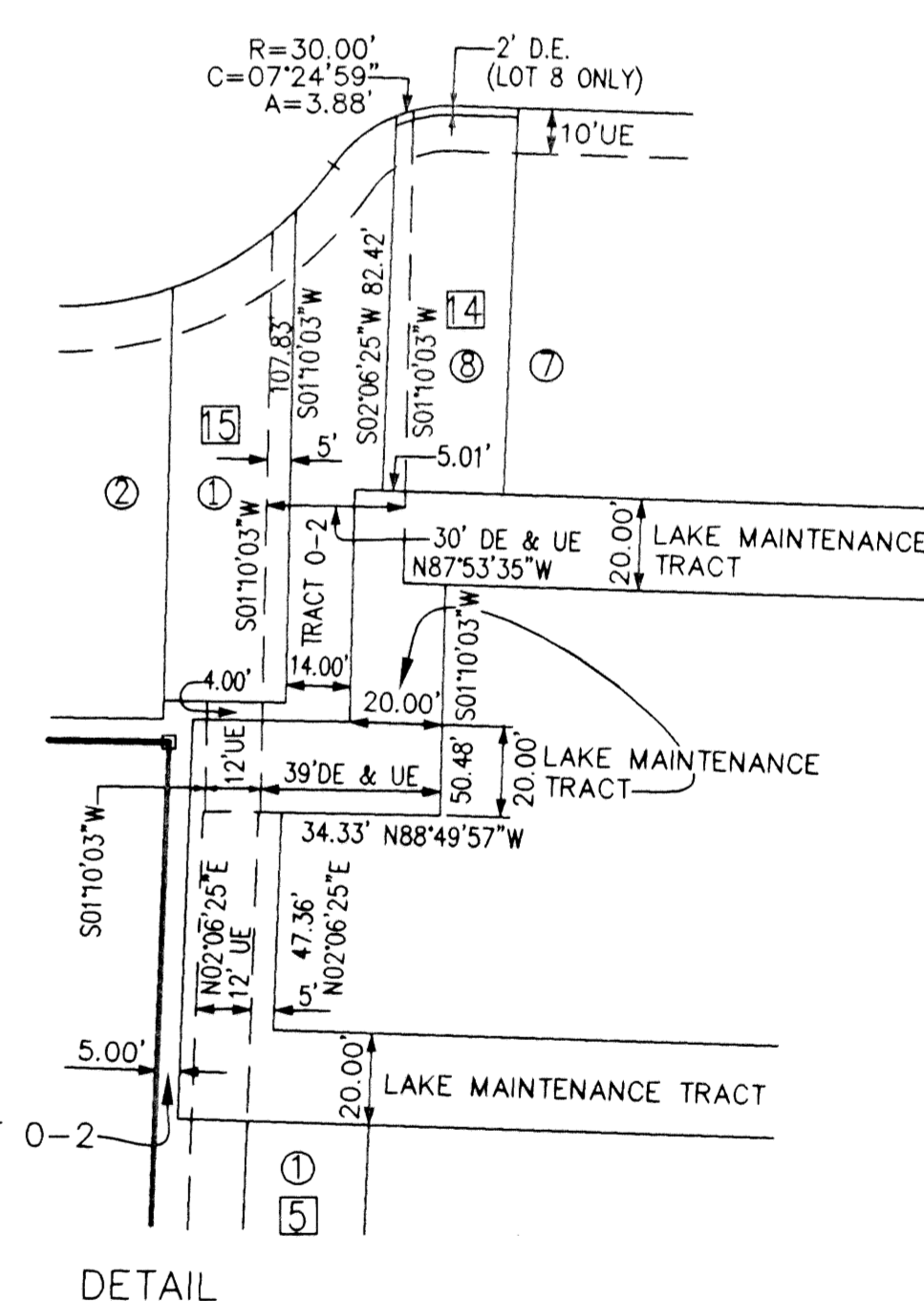
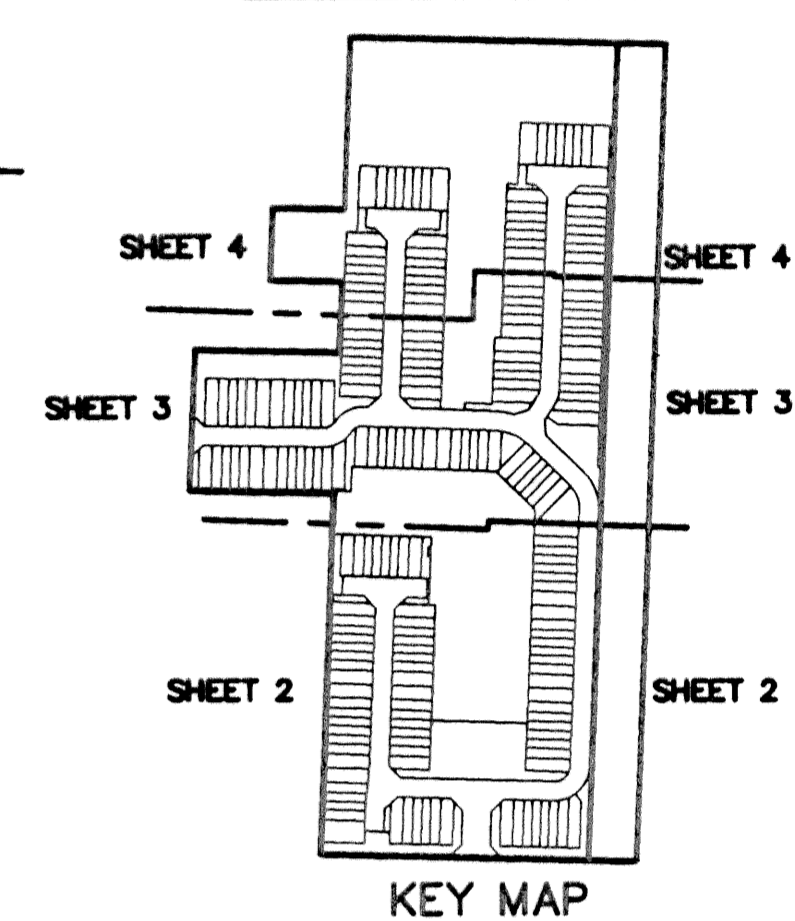
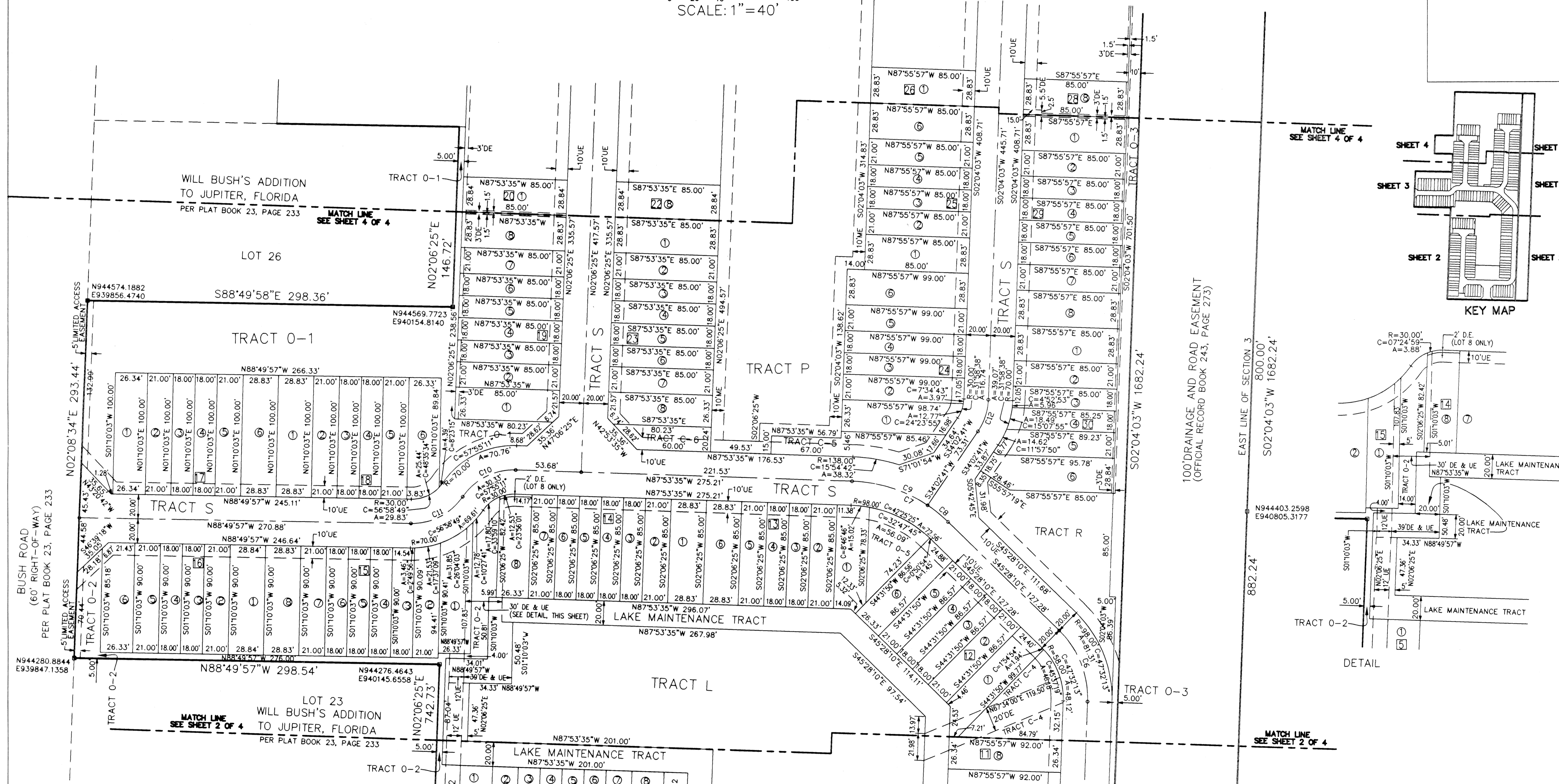
TIMBERWALK PUD

BEING A REPLAT OF LOTS 7, 8, AND 9, PLAT OF TARAGRAY,
RECORDED IN PLAT BOOK 66, PAGES 112 THROUGH 114
LYING IN SECTION 3, TOWNSHIP 41 SOUTH, RANGE 42 EAST,
TOWN OF JUPITER, PALM BEACH COUNTY, FLORIDA

OCTOBER 1998 SHEET 3 OF 4



NORTH



Curve	Radius	Central Angle	Length	Chord	Bearing
C1	568.45'	5°28'22"	54.30'	54.28'	S04°50'36"W
C2	528.45'	5°28'22"	50.48'	50.46'	S04°50'36"W
C3	528.45'	5°26'55"	50.25'	50.23'	N04°49'52"E
C4	528.45'	0°01'27"	0.23'	0.22'	N07°34'03"E
C5	51.00'	89°21'31"	79.54'	71.72'	N46°44'49"E
C6	78.00'	47°32'13"	64.71'	62.87'	S21°42'04"E
C7	118.00'	42°25'25"	87.37'	85.39'	N66°40'53"W
C8	118.00'	10°29'09"	21.59'	21.57'	S50°42'45"E
C9	118.00'	31°56'16"	65.78'	64.93'	S71°55'27"E
C10	50.00'	57°55'11"	50.54'	48.42'	S63°08'50"W
C11	50.00'	56°58'49"	49.72'	47.70'	N62°40'39"E
C12	50.00'	31°58'38"	27.91'	27.54'	S18°03'22"W

Messler & Associates
CONSULTING ENGINEERS
11211 Prosperity Farms Rd., Suite C-301, Palm Beach Gardens, Florida 33410
Phone (561) 627-2226 Fax (561) 624-1569
LICENSED BUSINESS No.3616

THIS INSTRUMENT WAS PREPARED BY
ROBERT BLASZYK IN THE OFFICES OF
MESSLER & ASSOCIATES
11211 PROSPERITY FARMS ROAD
SUITE C301
PALM BEACH GARDENS, FLORIDA

SUBDIVISION - Timberwalk
 BOOK - 84
 PLAT MAP # -
 ZONING -
 PLAT # -
 ZIP CODE -
 TOWN - Town of Jupiter
 SUB NAME -